

# LEGEND

**Groomed Trails**


**Ungroomed / Unmarked Trails**


**Snowmobile Riding Areas**

**Creeks**

**BC Hydro Power Lines**

\* In background red line shows proposed Gordon Dale Trail

 D.O.T. Radio Tower (Off Limits)


 View Points/Historical Points of Interest


### GPS Information

**1** Day Chalet  
Latitude and Longitude  
Lat = 50 40. 098'  
Long = 118 55. 656'  
Elevation: 6135 ft

**2** Gordon Sidney Cabin  
Latitude and Longitude  
Lat = 50 43. 480'  
Long = 118 54. 778'  
Elevation: 6771 ft

**3** Stash Cabin

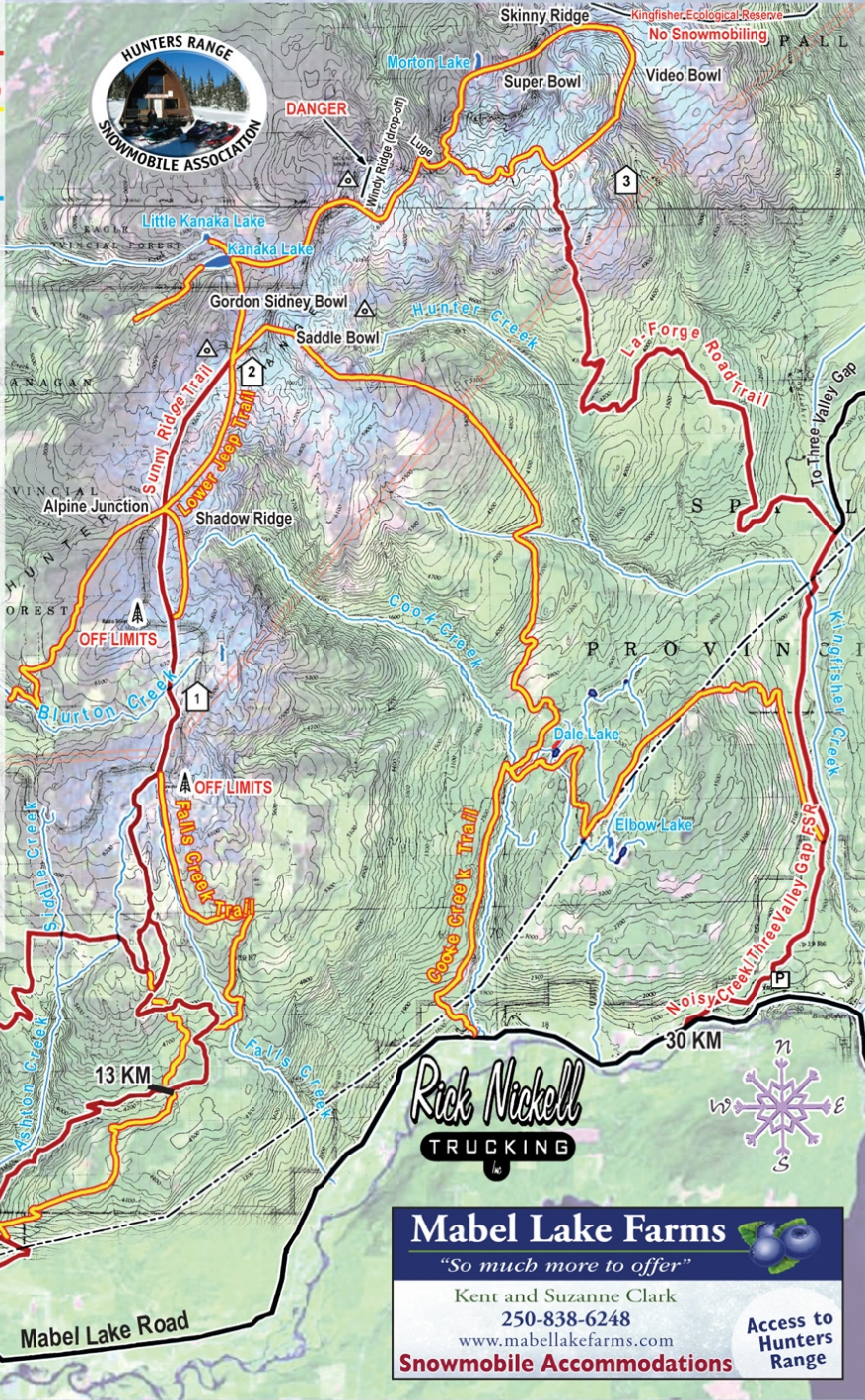
 Top Car Park

 Watershed Rd / Mabel Lake Rd.

Scale: 1:100,000



Watershed Rd  
13 KM  
Ashton Creek Store  
TO ENDERBY - 7 KM  
Trinity Valley Rd



**Rick Nickell**  
TRUCKING

**Mabel Lake Farms**  
"So much more to offer"  
Kent and Suzanne Clark  
250-838-6248  
www.mabellakefarms.com  
**Snowmobile Accommodations**

**Access to Hunters Range**